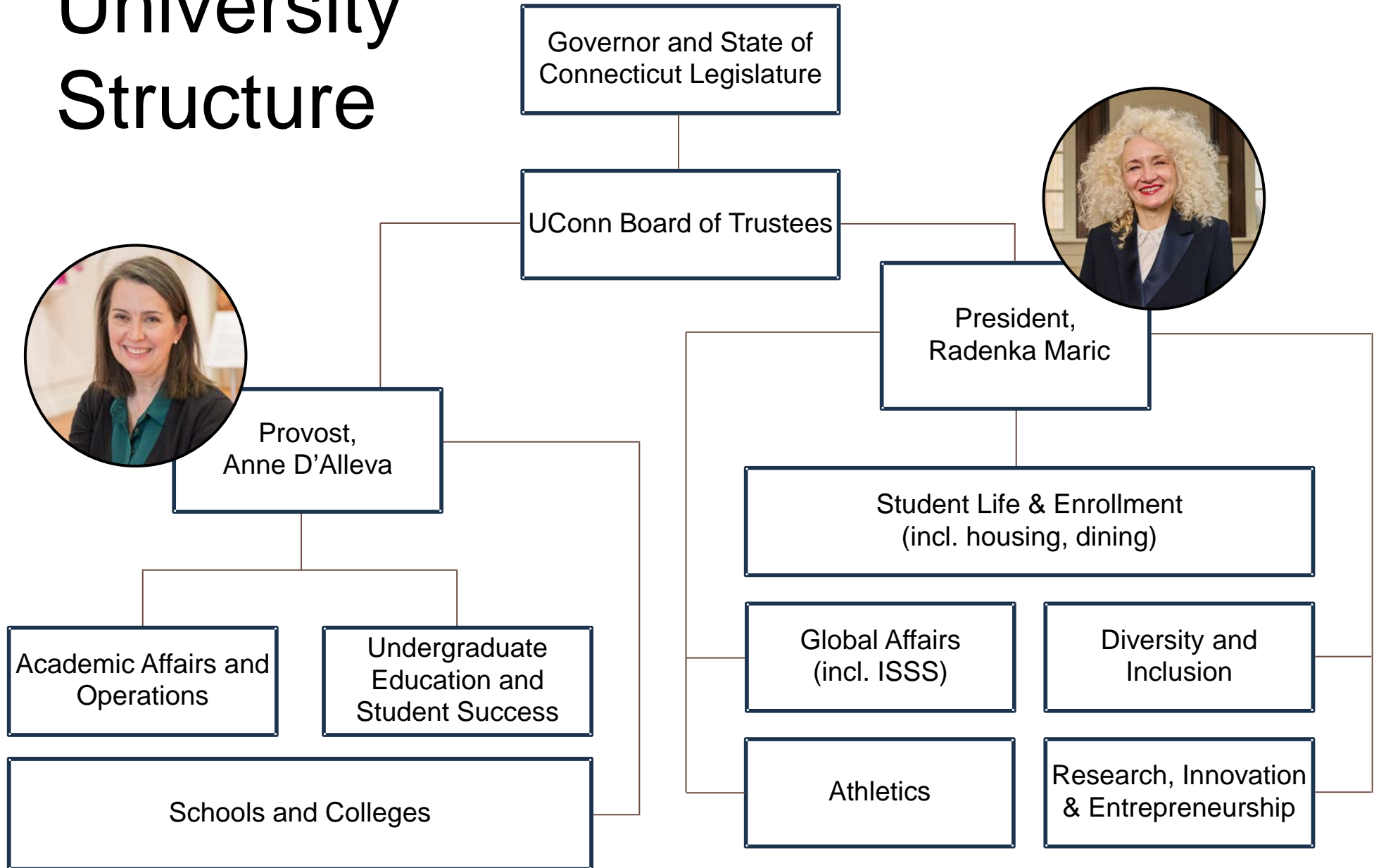


Academic Life & Expectations at

Tips for Student Success



University Structure



Schools and Colleges



College of Agriculture, Health and Natural Resources



College of Engineering



College of Liberal Arts and Sciences



School of Business



School of Fine Arts



Neag School of Education



School of Nursing



School of Pharmacy



School of Social Work

Professional Programs (Graduate Level)



School of Dental Medicine



School of Medicine



School of Law

Undergraduate students can be admitted to "Pre-" programs in Dental Medicine, Medicine, and Law

Undergraduate Programs



Degree Types

- Bachelor of Arts
- Bachelor of Science
- Bachelor of Fine Arts
- Bachelor of Music
- Bachelor of Science in Engineering
- Bachelor of Social Work

Double Major	Double Degree
2 majors in the same degree	2 majors in separate degree paths

Majors Offered

115+ academic majors



Academic Center for Exploratory Students (ACES)

- If you don't know what you want to study yet.
- If you are not admitted directly to your school or major.
- "The Major Experience" 1-credit course.

Course Registration

1st Semester

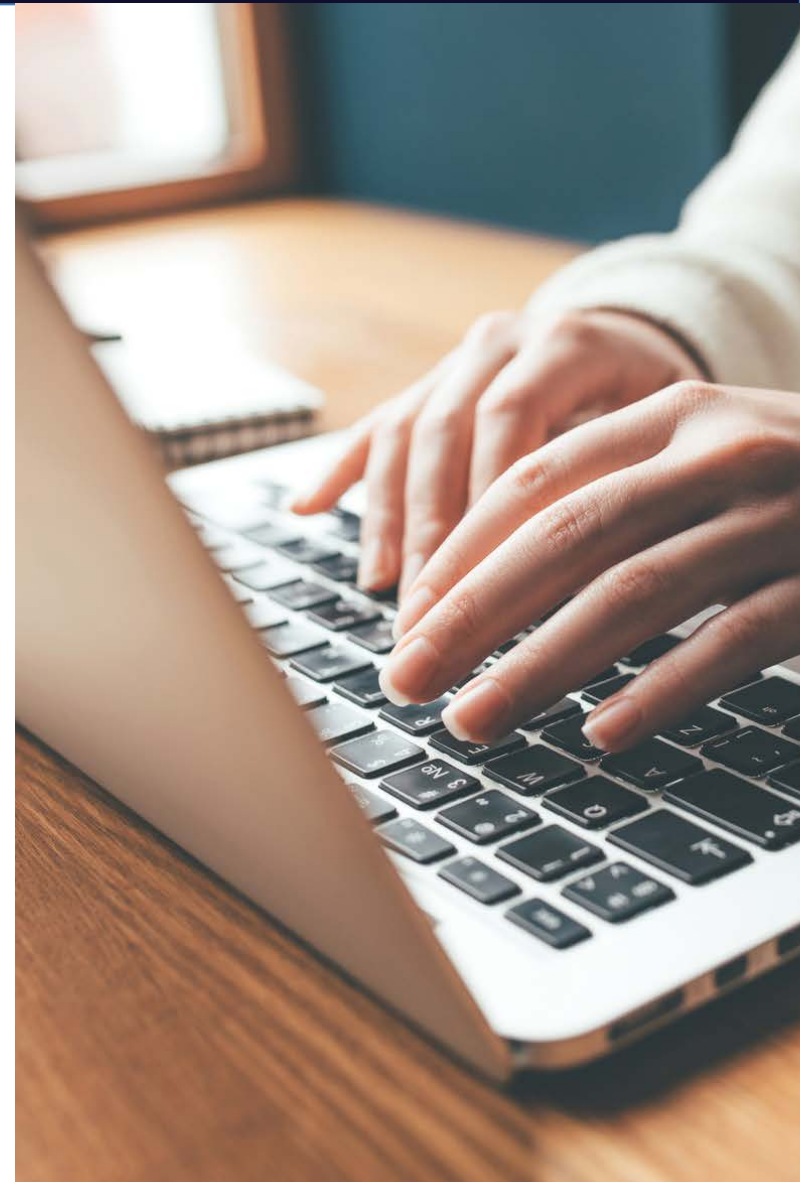
- Course registration is part of the university orientation process.
- After you register for your orientation session, sign up for an advising session to select your classes.
 - Group or individual
- Minimum: 12 credits/semester

Future Semesters

- Registration is based on your major and year in school.
 - Majors get priority for classes in their major.
 - Honors students receive priority registration.
- Register months before semester begins.
- Advisors and faculty mentors help with schedule planning.



Tip: To complete in 4 years,
average 15 credits/semester.



Academic Advising

Your Advisor helps you:

- Develop your independence
- Identify your goals and learn how to achieve those goals
- Understand academic requirements

You:

- Are an active partner in the advising process
- Will need to make decisions about your academic plan
- Must plan to ensure you complete your degree requirements.



Grading and Grade Point Average (GPA)

Explanation	Grade	Points
Excellent	A	4
	A-	3.7
Very Good	B+	3.3
Good	B	3
	B-	2.7
	C+	2.3
Average	C	2
Fair	C-	1.7
Poor	D+	1.3
	D	1
Merely Passing	D-	0.7
Failure	F	0

- Grades are based on completion and quality of academic work and active participation.
- Grade Point Average (GPA) = total grade points/total credits.
- Academic good standing = semester and cumulative GPA of 2.0 or higher.

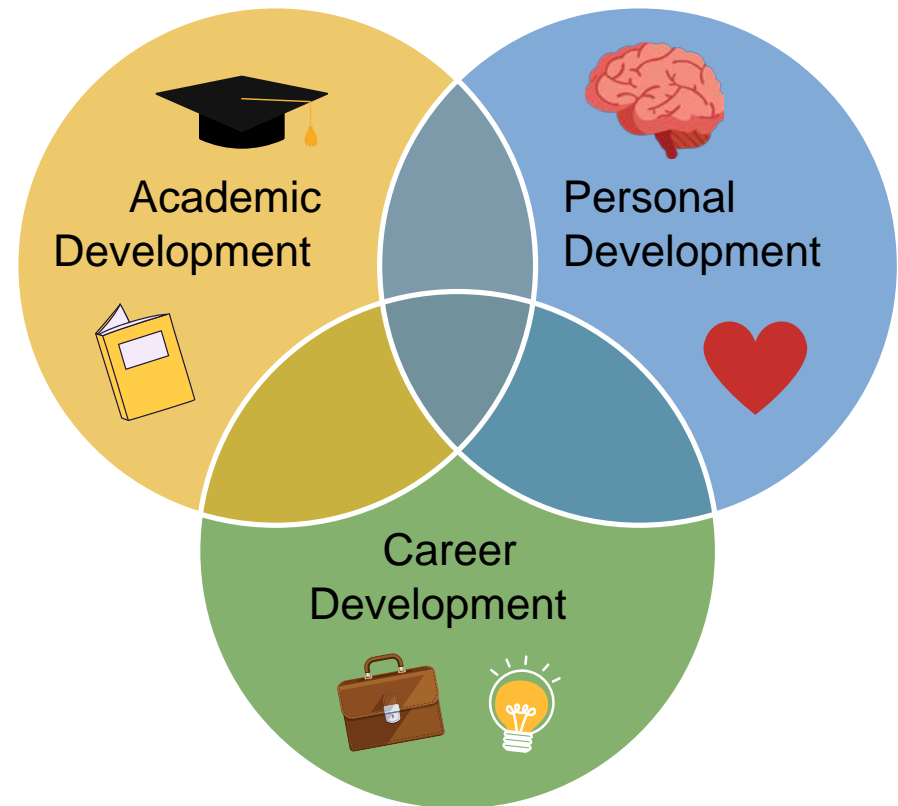
Holistic Approach to Higher Education

“Our intent is to ensure a fulfilling higher education experience toward the goal of graduation while also positioning students for academic, career and life success once they leave us...”

~ UConn Strategic Plan: 2024-2034










Promoting:

- Emotional intelligence
- Creative thinking
- Innovation
- Entrepreneurship
- Financial literacy
- Global citizenship
- Leadership



What Does This Look Like?

Taking courses outside your academic major:

Content Area Requirements	Demonstrating Competencies
 Arts and Humanities	 Information Literacy
 Social Sciences	 Quantitative Competency
 Science and Technology	 Second Language Competency
 Diversity and Multiculturalism	 Writing Competency
	 Environmental Literacy

Enrichment Opportunities



Mentorship Programs



Experiential Global Learning (study abroad)



Living and Learning Communities



Honors Program



Undergraduate research



Clubs/Student Activities



Career Development



On-campus Jobs/Internships



Entrepreneurship Programs



Academic Culture in the Classroom

Student Centered	Class Discussion	Group Learning	Classroom Informality	Academic Originality
<p>Students participate in constructing new knowledge.</p> <p>The teacher helps to facilitate that learning.</p>	<p>You are encouraged to add your perspective.</p> <p>It is important to complete all the course readings, so you are prepared to participate.</p> <p>It is okay to question a point the teacher is saying (politely).</p>	<p>You may engage in a lot of small group discussions or group projects with your classmates.</p>	<p>Classroom culture may seem informal</p> <p>Student dress, how the teacher might be called, eating and drinking food.</p>	<p>Originality of academic work is a core value and critical to your success.</p> <p><u>Get help if you are unsure how to navigate or have problems completing your work.</u></p>

Student Impressions

“

“They have like a cool way to teach. They explain it very well.... and they are always nice.”

“

“In some classes, where you have group stuff going on... I think the teacher isn't motivated, so we work in groups all the time.”



Setting You Up For Success



First Experience Year (FYE)

- 1-credit course, taken 1st semester
- Often taken with other international students
- Practice academic skills in a safe setting



First Year Writing

- Important to join the right course level.
- Self-placement survey.
- English 1003, 1004 may be needed before English 1007.



UCAELI (English Language Institute)

- English language support and practice.
- Conversation partner program.
- Evening English courses.

Academic Support Resources



- Academic Achievement Center (AAC)
 - International student peer tutors
 - Help with classes that are known to be difficult



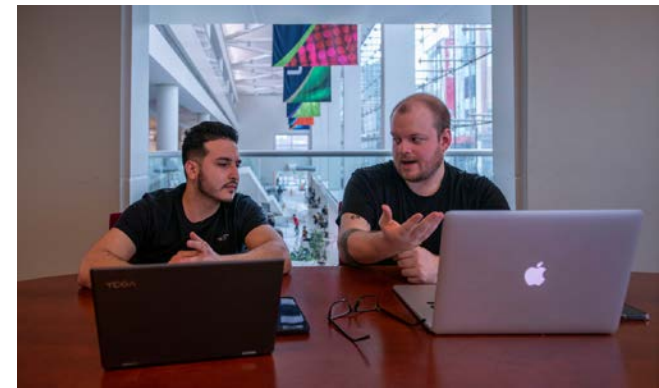
- Writing Center



- Q Center (math support)



- Tutoring Center at UConn Stamford
 - Includes Writing Center and help with specific subjects





Thank You!